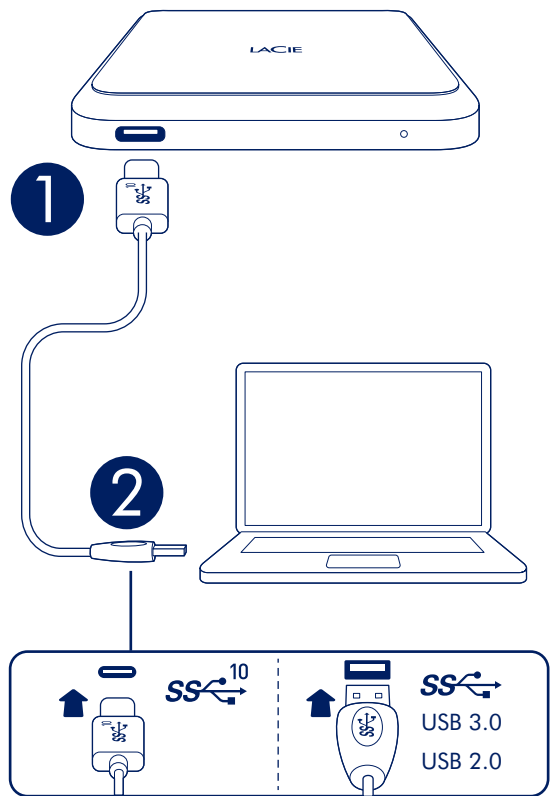




# PORTABLE SSD

High Performance External SSD | USB-C



## Quick Install Guide

### RU WWW.LACIE.COM

**Mac:** Для Time Machine твердотельный накопитель должен быть отформатирован для Mac.

Для обеспечения максимальной производительности подключите накопитель к порту USB-C 3.1 Gen 2. Также совместим с USB 3.0/2.0.

**ПРИМЕЧАНИЕ.** Чтобы обеспечить сохранность данных, при отключении продукта всегда выполняйте в операционной системе процедуру безопасного извлечения.

Чтобы просмотреть подробную информацию о гарантии на Portable SSD, откройте на накопителе файл с заявлением об ограниченной гарантии LaCie или перейдите по ссылке [www.lacie.com/warranty](http://www.lacie.com/warranty). За предоставлением гарантийного обслуживания обратитесь в уполномоченный сервисный центр компании LaCie или зайдите на сайт [www.lacie.com/support/lacie-portable-ssd](http://www.lacie.com/support/lacie-portable-ssd), чтобы получить дополнительную информацию об обслуживании клиентов в вашем регионе.

### ID WWW.LACIE.COM

**Mac:** Untuk Time Machine, SSD harus diformat untuk Mac. Untuk memaksimalkan kinerja, sambungkan SSD Anda ke port USB-C 3.1 Gen 2. Juga kompatibel dengan USB 3.0/2.0.

**Catatan:** Untuk melindungi data Anda, selalu ikuti prosedur pelepasan yang aman untuk sistem pengoperasian saat memutuskan koneksi produk Anda.

Tinjau kembali detail garansi Portable SSD Anda dengan membuka Pernyataan Garansi Terbatas LaCie untuk hard disk Anda atau kunjungi [www.lacie.com/warranty](http://www.lacie.com/warranty). Untuk meminta servis garansi, kontak service center resmi LaCie atau lihat [www.lacie.com/support/lacie-portable-ssd](http://www.lacie.com/support/lacie-portable-ssd) untuk info lebih lanjut mengenai dukungan pelanggan di daerah Anda.

### ZH CN WWW.LACIE.COM

**Mac:** 对于 Time Machine, 必须将 SSD 格式化为适用于 Mac。为获得最高性能, 请将您的硬盘连接到 USB-C 3.1 Gen 2 端口。同时兼容 USB 3.0/2.0。

**注意:** 为保护您的数据, 请在断开产品时, 总是按照适用于您的操作系统的安全卸下过程操作。

通过打开您的硬盘上“LaCie 有限保修声明”查看您的 Portable SSD 的保修, 或者访问 [www.lacie.com/warranty](http://www.lacie.com/warranty)。要申请保修服务, 请联系授权的 LaCie 服务中心或参考 [www.lacie.com/support/lacie-portable-ssd](http://www.lacie.com/support/lacie-portable-ssd) 了解更多有关您所在地区客户支持的更多信息。有关合规信息, 请访问 [www.lacie.com/manuals/lacie-portable-ssd](http://www.lacie.com/manuals/lacie-portable-ssd)。

### ZH TW WWW.LACIE.COM

**Mac:** 對於 Time Machine, 必須將 SSD 格式化為適用於 Mac。為獲得最高效能, 請將您的磁碟機連接至 USB-C 3.1 Gen 2 連接埠。同時與 USB 3.0/2.0 相容。

**備註:** 為保護您的資料, 請在中斷您產品的連接時始終執行作業系統的安全移除程序。

透過開啟磁碟機上的 LaCie 有限保固聲明或前往 [www.lacie.com/warranty](http://www.lacie.com/warranty) 檢閱您的 Portable SSD 保固的詳細資料。若要申請保固服務, 請聯絡授權的 LaCie 服務中心, 或前 [www.lacie.com/support/lacie-portable-ssd](http://www.lacie.com/support/lacie-portable-ssd) 了解在您所在轄區獲取客戶支援的詳細資訊。有關合規資訊, 請造訪 [www.lacie.com/manuals/lacie-portable-ssd](http://www.lacie.com/manuals/lacie-portable-ssd)。

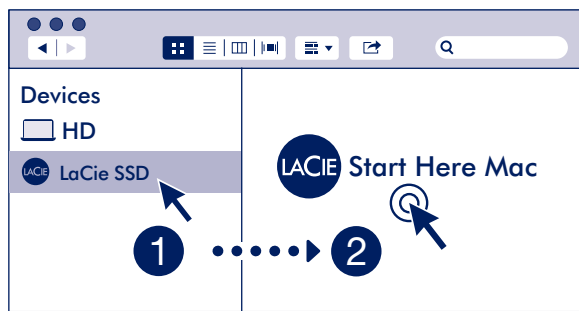
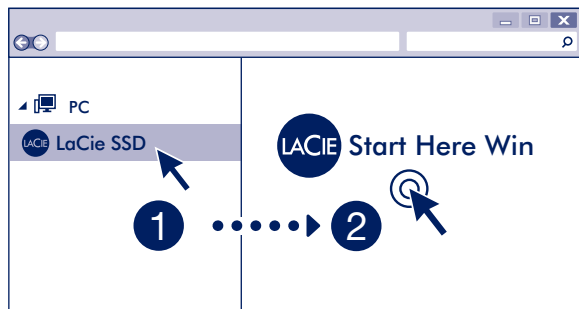
### JA WWW.LACIE.COM

**Mac:** Time Machine を使用する場合は, SSD を Mac 用にフォーマットする必要があります。性能を最大限に活用するには, ドライブを USB-C 3.1 Gen 2 ポートに接続します。USB 3.0/2.0 にも対応しています。

**注:** データ損失を防止するため, 製品を取り外す際にはオペレーティング システムの手順に従い, 正しい方法で切断してください。

Portable SSDの保証に関する詳細については, お使いのドライブの LaCie Limited Warranty 証明書をご確認いただくか, [www.lacie.com/warranty](http://www.lacie.com/warranty) をご参照ください。保証サービスの依頼は, LaCie 認定サービスセンターにご連絡いただくか, ウェブサイト [www.lacie.com/support/lacie-portable-ssd](http://www.lacie.com/support/lacie-portable-ssd) にてお住まいの国や地域におけるカスタマーサポートについての詳細情報をご確認ください。

## 3



### EN WWW.LACIE.COM

**Mac:** For Time Machine, the SSD must be formatted for Mac. To maximize performance, connect your drive to a USB-C 3.1 Gen 2 port. Also compatible with USB 3.0/2.0.

**Note:** To protect your data, always follow the safe removal procedures for your operating system when disconnecting your product.

Review details of your Portable SSD's warranty by opening the LaCie Limited Warranty Statement on your drive or go to [www.lacie.com/warranty](http://www.lacie.com/warranty). To request warranty service, contact an authorized LaCie service center or refer to [www.lacie.com/support/lacie-portable-ssd](http://www.lacie.com/support/lacie-portable-ssd) for more information regarding customer support within your jurisdiction.

### FCC DECLARATION OF CONFORMANCE

This device complies with Part 15 of the FCC Rules. Operation is subject to the following two conditions: (1) this device may not cause harmful interference, and (2) this device must accept any interference received, including interference that may cause undesired operation.

### CLASS B

This equipment has been tested and found to comply with the limits for a Class B digital device, pursuant to Part 15 of the FCC Rules. These limits are designed

to provide reasonable protection against harmful interference in residential installation. This equipment generates, uses, and can radiate radio frequency energy and, if not installed and used in accordance with the instructions, may cause harmful interference to radio communications.

However, there is no guarantee that interference will not occur in a particular installation. If this equipment does cause harmful interference to radio or television reception, which can be determined by turning the equipment off and on, the user is encouraged to try to correct the interference by one or more of the following measures:

- Reorient or relocate the receiving antenna.
  - Increase the separation between the equipment and receiver.
  - Connect the equipment into an outlet on a circuit different from that to which the receiver is connected.
  - Consult the dealer or an experienced radio/TV technician for help.
- CAUTION:** Any changes or modifications made to this equipment may void the user's authority to operate this equipment.

### FR WWW.LACIE.COM

**Mac :** Dans le cas de Time Machine, le disque SSD doit être formaté pour Mac. Pour optimiser les performances

de votre disque, connectez-le à un port USB-C 3.1 de seconde génération. Également compatible USB 3.0/2.0.

**REMARQUE :** Pour protéger vos données, suivez toujours les procédures de retrait sécurisé correspondant à votre système d'exploitation lors de la déconnexion du produit.

Pour connaître les conditions de garantie de votre Portable SSD, ouvrez la déclaration de garantie limitée LaCie sur votre disque ou consultez la page [www.lacie.com/warranty](http://www.lacie.com/warranty). Pour toute demande d'intervention sous garantie, contactez un centre de réparation agréé LaCie clientèle ou consultez le site [www.lacie.com/support/lacie-portable-ssd](http://www.lacie.com/support/lacie-portable-ssd) pour obtenir de plus amples informations sur le support clientèle dont vous dépendez.

### IT WWW.LACIE.COM

**Mac:** Per Time Machine, è necessario formattare la SSD per Mac. Per massimizzare le prestazioni, collegare l'unità ad una porta USB-C 3.1 Gen 2. Compatibile anche con USB 3.0/2.0.

**NOTA:** per proteggere i dati, disconnettere sempre il dispositivo applicando la procedura di rimozione sicura dell'hardware.

Controllare i dettagli della garanzia del vostro Portable SSD aprendo la Garanzia Limitata di LaCie Informativa presente sulla

vostra unità o su [www.lacie.com/warranty](http://www.lacie.com/warranty). Per richiedere un servizio coperto da garanzia contattare un centro di assistenza autorizzato LaCie o fare riferimento a [www.lacie.com/support/lacie-portable-ssd](http://www.lacie.com/support/lacie-portable-ssd) per maggiori informazioni in merito all'assistenza clienti presente nel vostro territorio.

### DE WWW.LACIE.COM

**Mac:** Zur Verwendung von Time Machine muss die SSD für den Mac formatiert sein. Für maximale Leistung verbinden Sie die Festplatte mit einem USB-C 3.1 Gen 2-Anschluss. Auch mit USB 3.0/2.0 kompatibel.

**HINWEIS:** Befolgen Sie immer die Anweisungen Ihres Betriebssystemes zum sicheren Entfernen der Festplatte, um die Integrität Ihrer Daten zu gewährleisten.

Einzelheiten zur Garantie für Ihre Portable SSD finden Sie in der LaCie Garantieerklärung zu Ihrer Festplatte oder auf [www.lacie.com/warranty](http://www.lacie.com/warranty). Im Garantiefall wenden Sie sich bitte an ein autorisiertes LaCie Servicecenter oder besuchen Sie [www.lacie.com/support/lacie-portable-ssd](http://www.lacie.com/support/lacie-portable-ssd), wo Sie weitere Informationen über den Kundensupport in Ihrer Region erhalten.

### ES WWW.LACIE.COM

**Mac:** La unidad de estado sólido (SSD) debe estar formateada para Mac para poder utilizar Time Machine.

Para maximizar el rendimiento, conecte la unidad a un puerto USB-C 3.1. También es compatible con USB 3.0/2.0.

**NOTA:** Para proteger sus datos, asegúrese de seguir los procedimientos de extracción segura de su sistema operativo siempre que desconecte el producto.

Revise los detalles de la garantía de su Portable SSD abriendo la declaración de garantía limitada de LaCie que se encuentra en su unidad o visite [www.lacie.com/warranty](http://www.lacie.com/warranty). Para solicitar servicio técnico bajo la garantía, póngase en contacto con un centro de servicio autorizado de LaCie o visite [www.lacie.com/support/lacie-portable-ssd](http://www.lacie.com/support/lacie-portable-ssd) si desea obtener más información sobre el servicio técnico en su territorio.

### NL WWW.LACIE.COM

**Mac:** Voor Time Machine moet de SSD geformatteerd zijn voor Mac. Sluit de harde schijf met het oog op betere prestaties aan op een USB-C 3.1 Gen 2 poort. Ook compatibel met USB 3.0/2.0.

**OPMERKING:** Volg ter bescherming van uw gegevens altijd de procedures van uw besturingssysteem voor het veilig verwijderen van hardware als u het product wilt loskoppelen.

Meer informatie over de garantie op uw Portable SSD vindt u door de LaCie Limited Garantieverklaring te openen

op uw schijf of door naar [www.lacie.com/warranty](http://www.lacie.com/warranty) te gaan. Om de garantieservice aan te vragen, kunt u contact opnemen met een erkend LaCie-servicecenter of ga naar [www.lacie.com/support/lacie-portable-ssd](http://www.lacie.com/support/lacie-portable-ssd) voor meer informatie over klantenservice in uw regio.

### PT WWW.LACIE.COM

**Mac:** Para utilizar o Time Machine, o SSD tem de ser formatado para Mac.

Para maximizar o desempenho, ligue a unidade a uma porta USB-C 3.1 Gen 2. Também é compatível com USB 3.0/2.0.

**NOTA:** Para proteger os seus dados, sempre que pretender desligar o seu produto, cumpra os procedimentos de remoção segura aplicáveis ao seu sistema operativo.

Analise os detalhes da garantia do seu Portable SSD abrindo a Declaração de garantia limitada do LaCie em seu disco ou em [www.lacie.com/warranty](http://www.lacie.com/warranty). Para solicitar o serviço de garantia, entre em contato com um centro de serviço autorizado da LaCie ou consulte [www.lacie.com/support/lacie-portable-ssd](http://www.lacie.com/support/lacie-portable-ssd) para obter mais informações em relação ao suporte ao cliente em sua jurisdição.

**China RoHS 2 table**  
China RoHS 2 refers to the Ministry of Industry and Information Technology Order No. 32, effective July 1, 2016, titled Management Methods for the Restriction of the Use of Hazardous Substances in Electrical and Electronic Products. To comply with China RoHS 2, we determined this product's Environmental Protection Use Period (EUP) to be 20 years in accordance with the Marking for the Restricted Use of Hazardous Substances in Electronic and Electrical Products, SJ/T 11364-2014.

部件名称 Part Name	有害物质 Hazardous Substances					
	铅 (Pb)	汞 (Hg)	镉 (Cd)	六价铬 (Cr <sup>VI</sup> )	多溴联苯 (PBB)	多溴二苯醚 (PBDE)
商品驱动器 SSD	X	0	0	0	0	0
外接硬盘印刷电路板 Bridge PCB	X	0	0	0	0	0
电源 (如果提供) Power Supply (if provided)	X	0	0	0	0	0
接口电缆 (如果提供) Interface cable (if provided)	X	0	0	0	0	0
其他外壳组件 Other enclosure components	0	0	0	0	0	0

本表格依据 SJ/T 11364 的规定编制。  
This table is prepared in accordance with the provisions of SJ/T 11364-2014.

0: 表示该有害物质在该部件所有均质材料中的含量均在 GB/T 26572 规定的限量要求以下。  
0: Indicates that the hazardous substance contained in all of the homogeneous materials for this part is below the limit requirement of GB/T26572.

X: 表示该有害物质至少在该部件的某一均质材料中的含量超过 GB/T 26572 规定的限量要求。  
X: Indicates that the hazardous substance contained in at least one of the homogeneous materials used for this part is above the limit requirement of GB/T26572.

**Taiwan RoHS table**  
Taiwan RoHS refers to the Taiwan Bureau of Standards, Metrology and Inspection's (BSMI's) requirements in standard CNS 15663. Guidance to reduction of the restricted chemical substances in electrical and electronic equipment. Beginning on January 1, 2018, Seagate products must comply with the "Marking of presence" requirements in Section 5 of CNS 15663. This product is Taiwan RoHS compliant.

單元 Unit	限制物質及其化學符號 Restricted Substance and its chemical symbol					
	鉛 (Pb)	汞 (Hg)	鎘 (Cd)	六價鉻 (Cr <sup>VI</sup> )	多溴聯苯 (PBB)	多溴二苯醚 (PBDE)
圓形磁碟器 SSD	-	0	0	0	0	0
外接硬盤印刷電路板 Bridge PCB	-	0	0	0	0	0
電源 (如果提供) Power Supply (if provided)	-	0	0	0	0	0
傳輸線材 (如果提供) Interface cable (if provided)	-	0	0	0	0	0
其他外殼組件 Other enclosure components	0	0	0	0	0	0

備考 1: 0: 係指該項限制物質之百分比含量未超出百分比含量基準值。  
Note 1: 0: Indicates that the percentage content of the restricted substance does not exceed the percentage of reference value of presence.

備考 2: -: 係指該項限制物質為豁免項目。  
Note 2: -: Indicates that the restricted substance corresponds to the exemption.



© 2018 Seagate Technology LLC. All rights reserved. Seagate, Seagate Technology, the Spiral logo, LaCie, and the LaCie logo are registered trademarks of Seagate Technology LLC in the United States and/or other countries. All other trademarks or registered trademarks are the property of their respective owners. Seagate reserves the right to change, without notice, product offerings or specifications.

Seagate Technology LLC  
10200 S. De Anza Blvd.  
Cupertino, CA 95014  
U.S.A.

Seagate Singapore International  
Headquarters Pte. Ltd.  
Koolhovenlaan 1  
1119 NB Schiphol-Rijk  
The Netherlands

